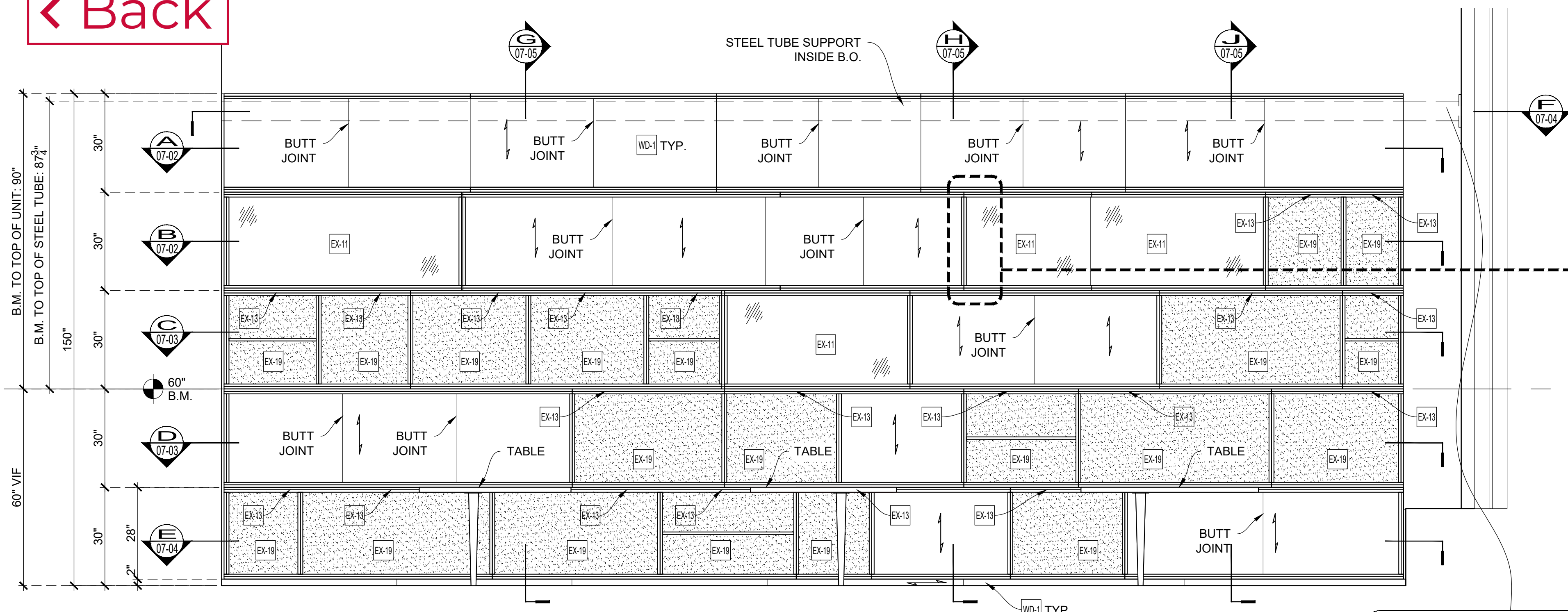


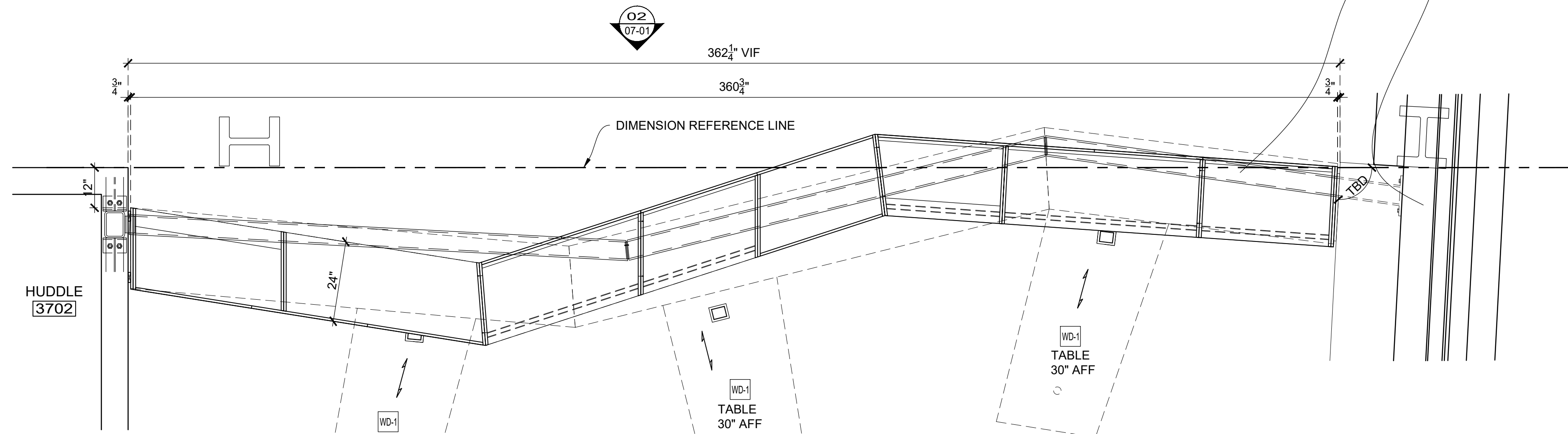
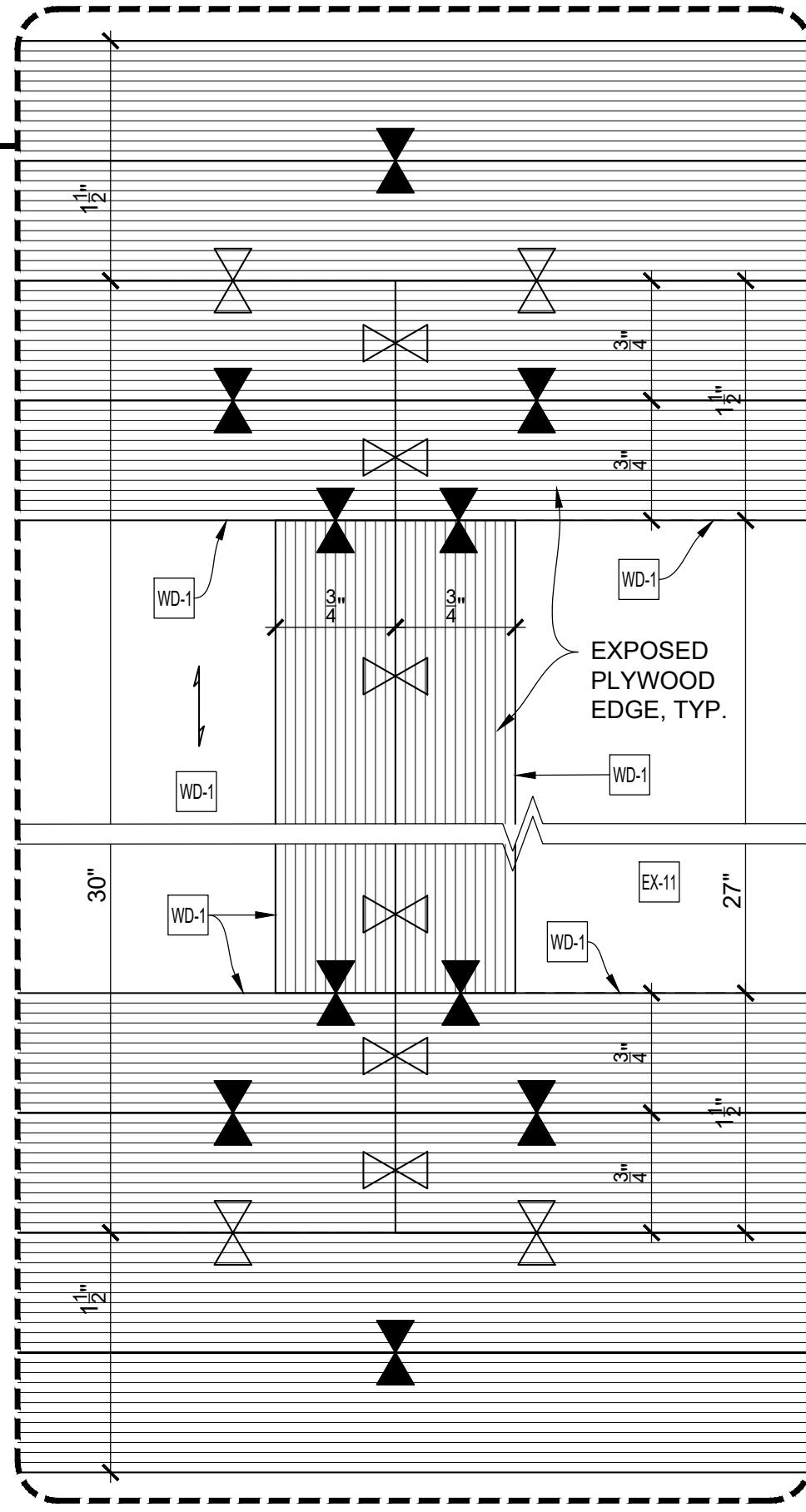
[Back](#)



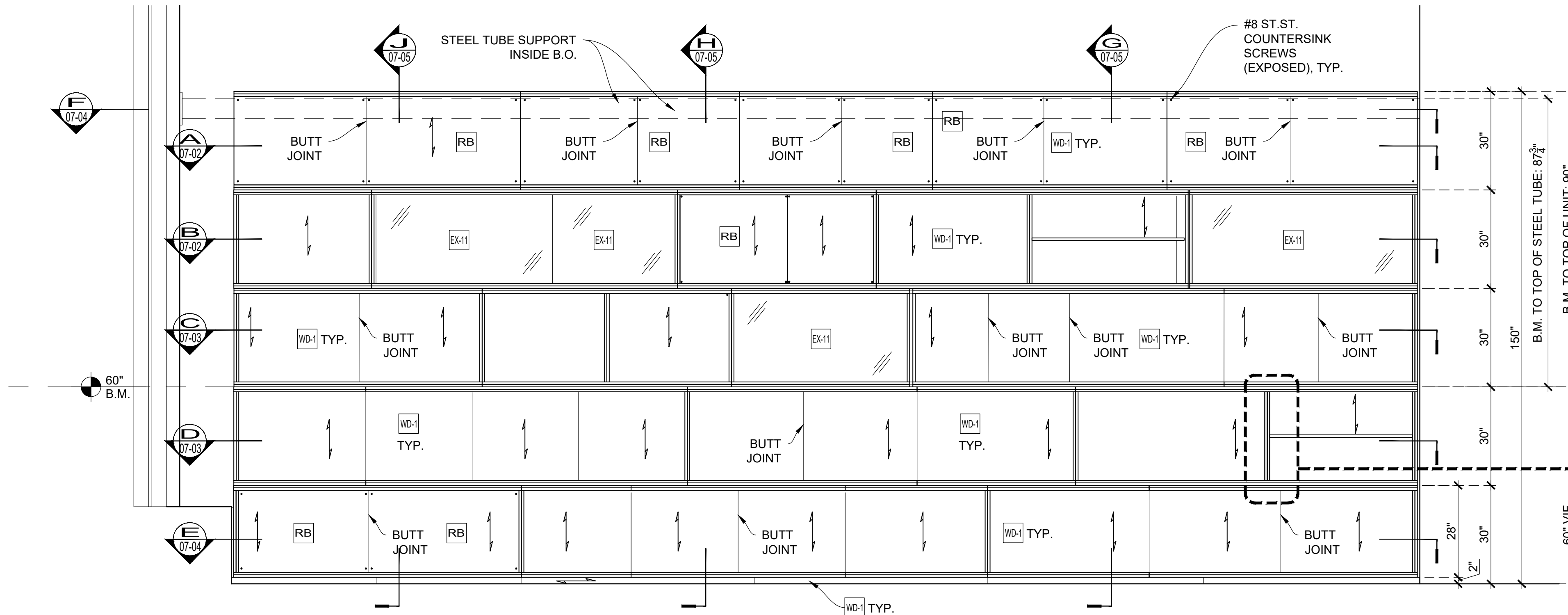
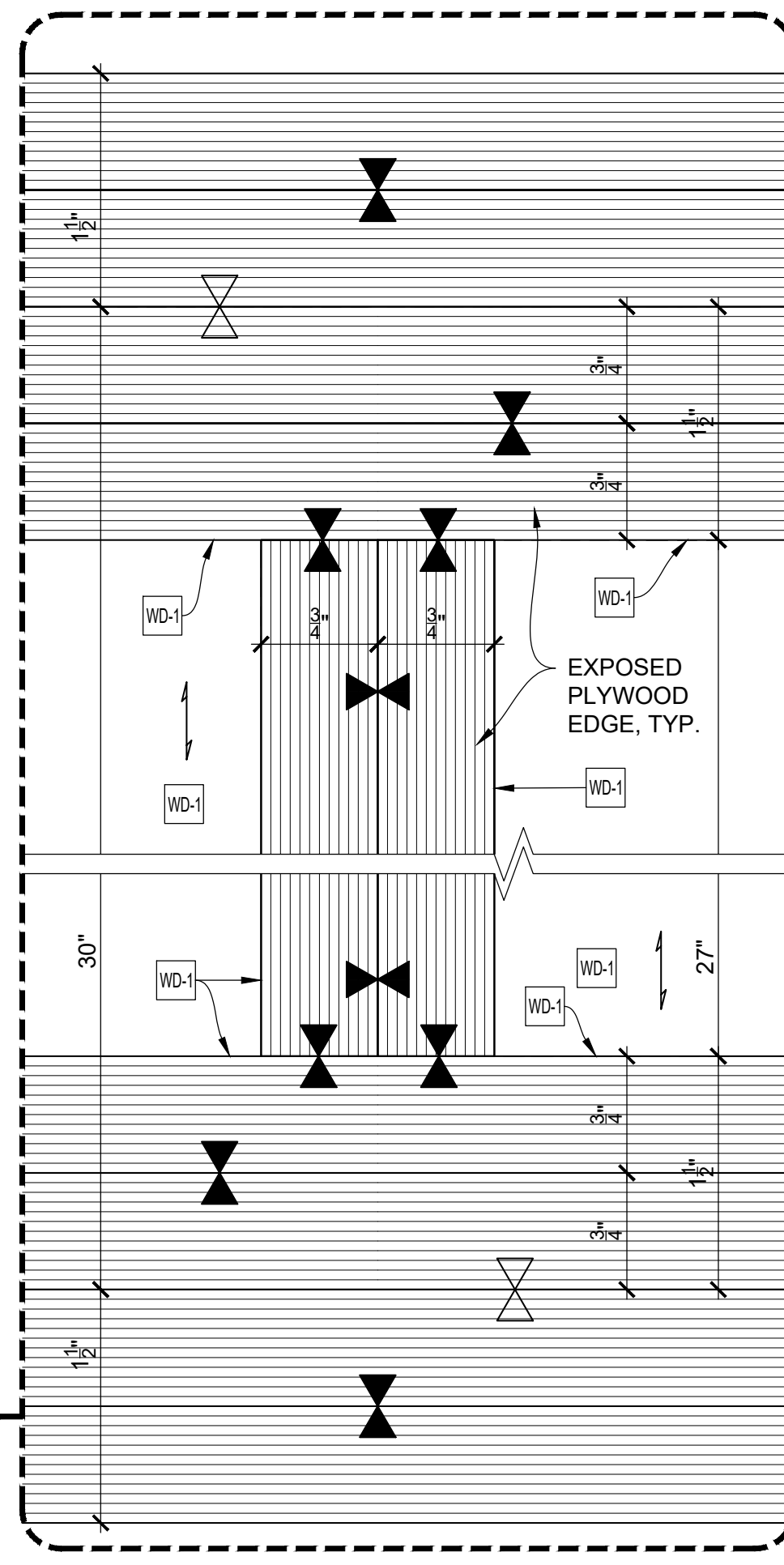
ELEVATION
SCALE: 1/2" = 1'-0"
Arch't Ref.: 1B/A-845.00

STEEL TUBE SUPPORT INSTALLATION TO BE COORDINATED WITH STRUCTURAL STEEL

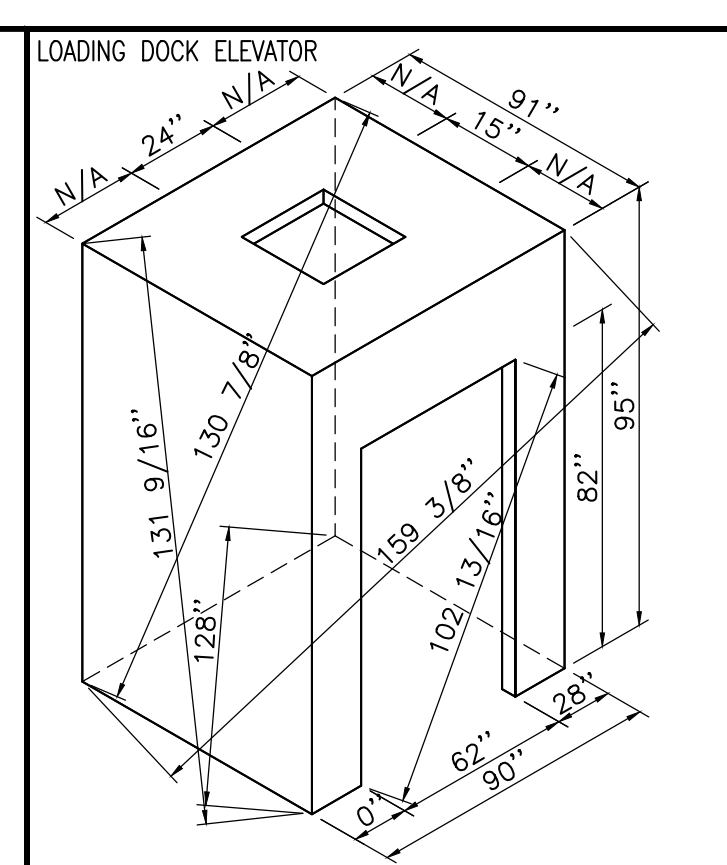
- REMOVABLE BACKS FOR FASTENING
- LOOSE TO FIELD
- INSTALLED LAST



PLAN
SCALE: 1/2" = 1'-0"
Arch't Ref.: A-103.00, 1/A-846.00



ELEVATION
SCALE: 1/2" = 1'-0"
Arch't Ref.: 1B/A-845.00



- Loose to field
- Fixed in shop

THIS SPACE RESERVE FOR FINISH SCHEDULE

THIS SPACE RESERVED FOR GENERAL NOTES

- EXCLUSIONS:**
- EX-11 1/2" LAMINATED GLASS
 - EX-13 LIGHT FIXTURE (L15)
 - EX-18 LIGHT FIXTURE (L5)
 - EX-19 FABRIC PANEL 1" THK (AC1.1)

NAUF CERTIFIED PROJECT
ALL MATERIALS TO BE UREA FORMALDEHYDE FREE

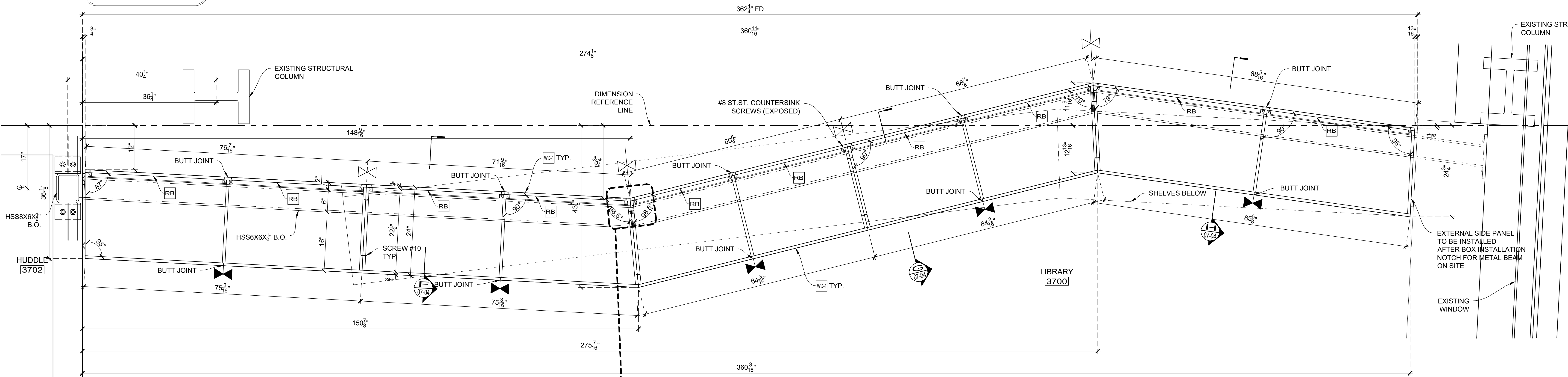
DRAWING SUBMITTALS AND RETURNS			
DATE	PURPOSE	TO	RETURN RETURN STATUS
2019-08	FOR APPROVAL	JT MAGEN	2019-02-14 APPROVED AS NOTED

DRAWING REVISIONS			
DATE	DESCRIPTION	REVISED BY	COMMENTS
1			
2			
3			
4			
5			
6			
7			
8			
9			
10			

RELEASES FOR FABRICATION	
DATE	DESCRIPTION

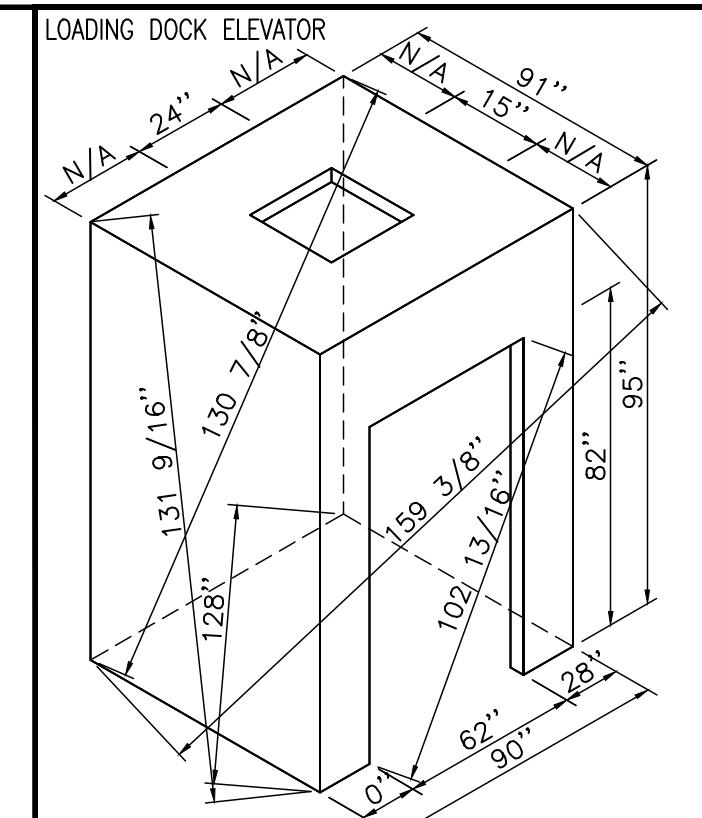
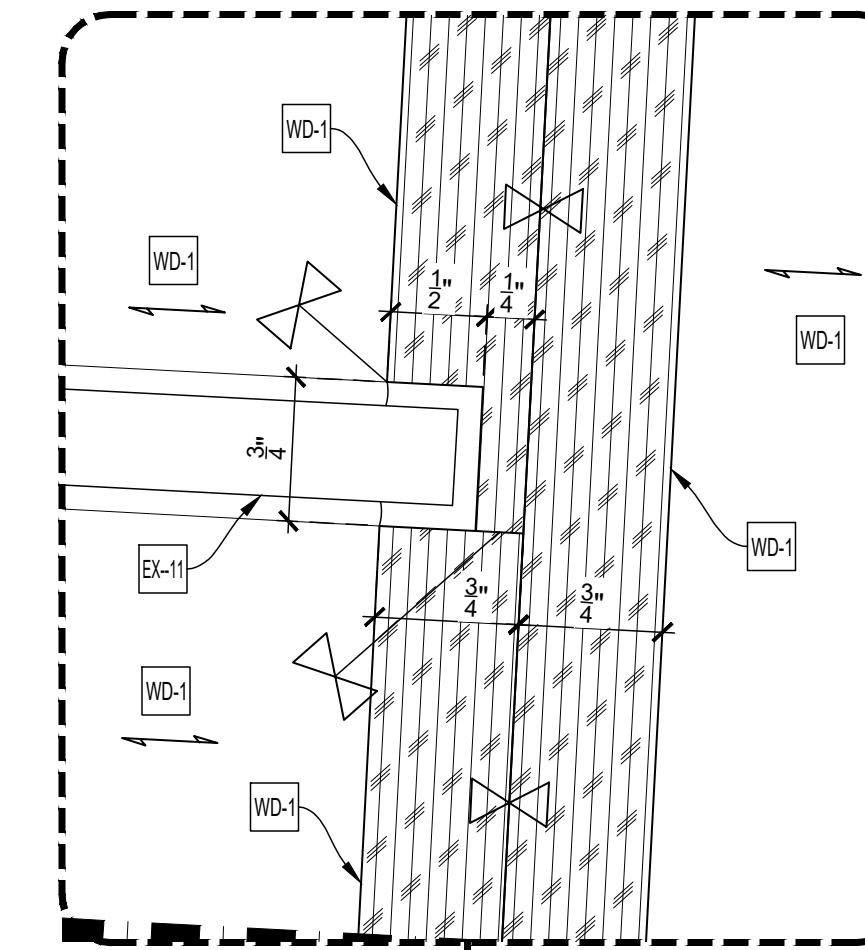
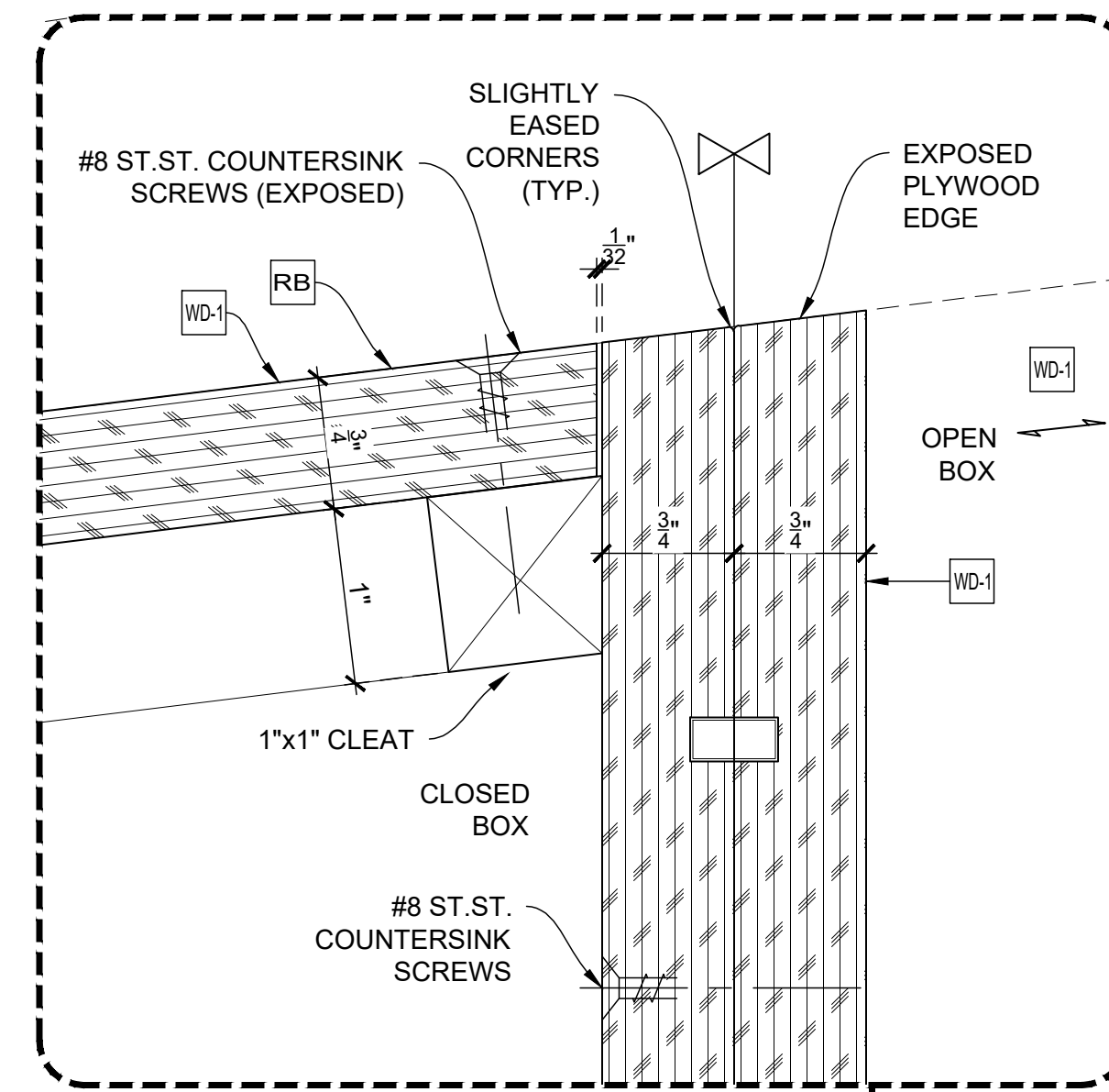
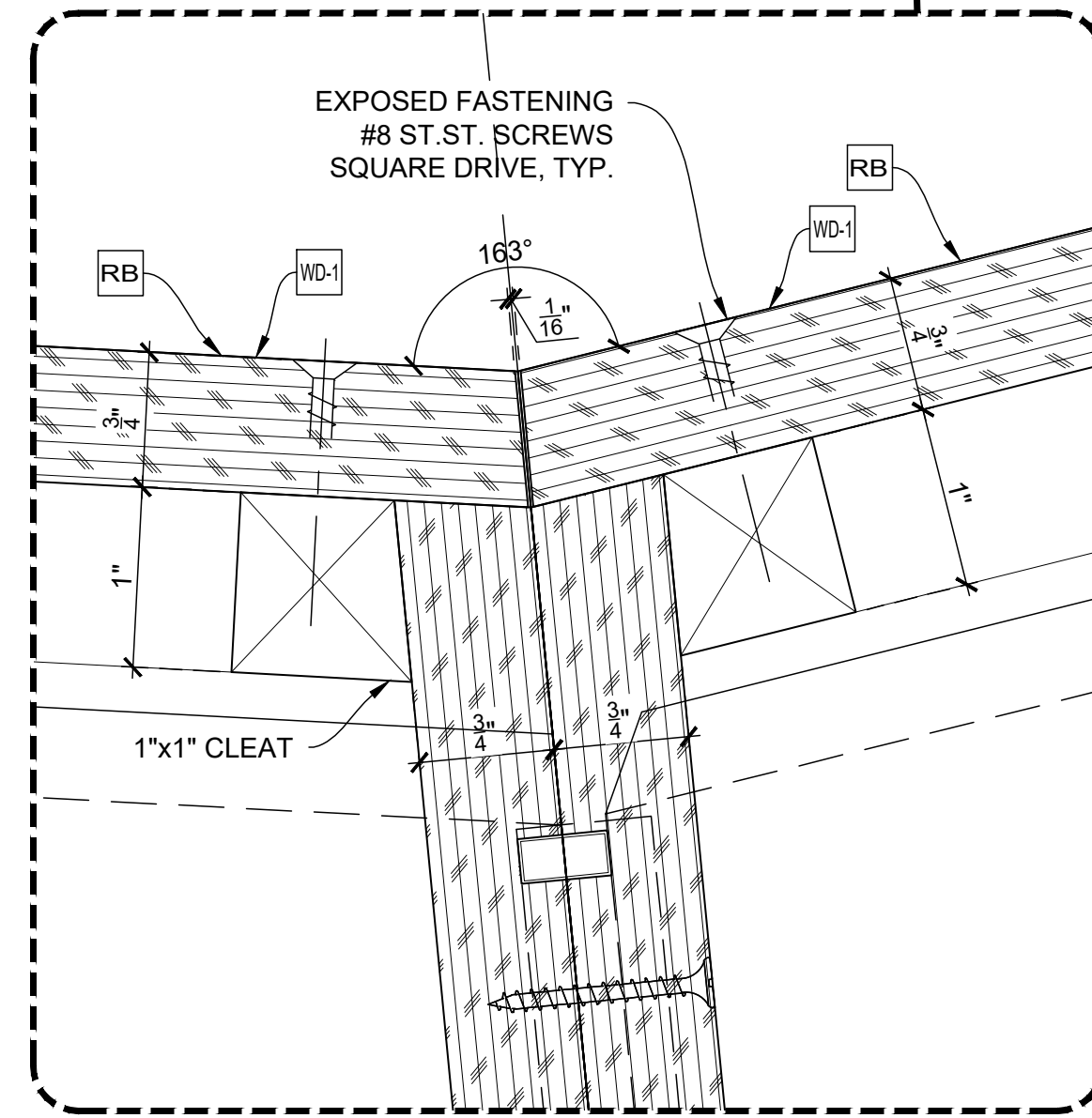
TITLE:
ITEM NO:
DESC.: PLAN
DESC.: PLYWOOD SHELVING UNIT AT LIBRARY 3700
By: PD Scale: As Noted Job No. Dwg. No. 07-01
Status: APPROVED AS NOTED Date: 2019-01-08

TO BE COORDINATED WITH
STRUCTURAL STEEL DRAWINGS



PLAN SECTION
SCALE: 1" = 1'-0"
Arch't Ref.: 1E/A-846.00

- RB - REMOVABLE BACKS FOR FASTENING
- LOOSE TO FIELD
- INSTALLED LAST



- ⊗ - Loose to field
- ⊠ - Fixed in shop

THIS SPACE RESERVE FOR FINISH SCHEDULE

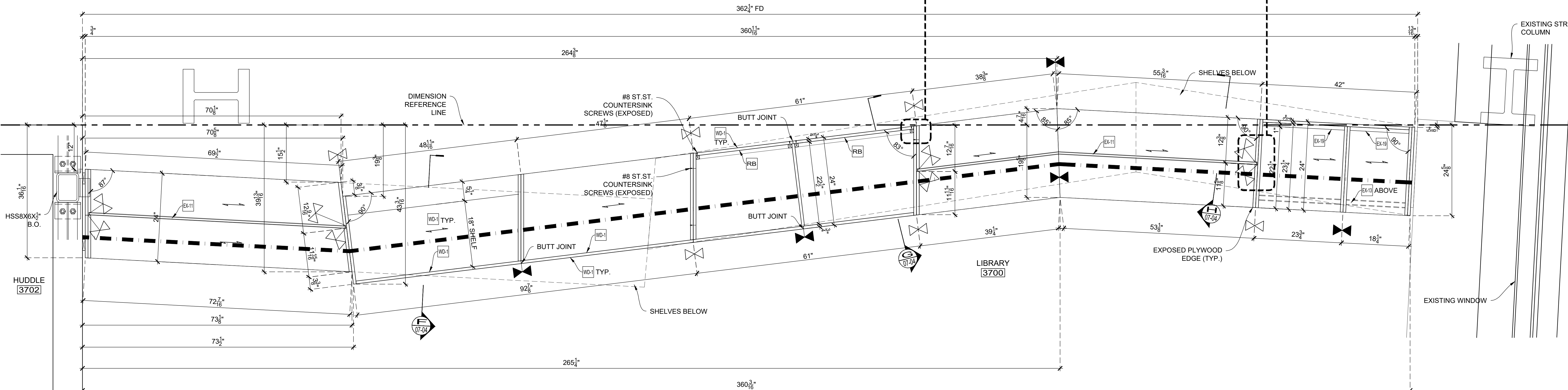
- EXCLUSIONS:
- EX-11 1/2" LAMINATED GLASS
 - EX-13 LIGHT FIXTURE (L15)
 - EX-18 LIGHT FIXTURE (L5)
 - EX-19 FABRIC PANEL 1" THK. (AC1.1)

NAUF CERTIFIED PROJECT
ALL MATERIALS TO BE UREA FORMALDEHYDE FREE

DRAWING SUBMITTALS AND RETURNS				
DATE	PURPOSE	TO	RETURN	RETURN STATUS
2019-01	FOR APPROVAL	JT MAGEN	2019-02-14	APPROVED AS NOTED

DRAWING REVISIONS			
DATE	DESCRIPTION	REVISOR	COMMENTS

RELEASES FOR FABRICATION	
DATE	DESCRIPTION



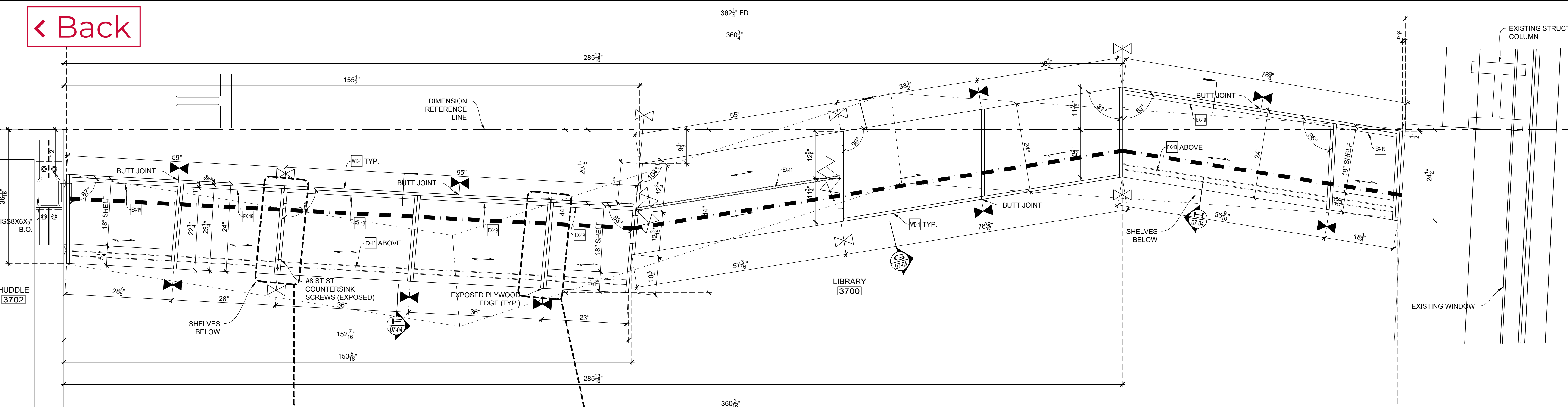
PLAN SECTION
SCALE: 1" = 1'-0"
Arch't Ref.: 1E/A-846.00

--- 2" x 3" ROUTED GROOVE CONTINUOUS AT TOP OF EACH LEVEL FOR LOW VOLTAGE WIRES TO FIXTURE L15

TITLE: Library Shelving Unit And Tables
ITEM NO: 7
DESC: SECTIONS
DESC: PLYWOOD SHELVING UNIT AT LIBRARY 3700

By: PD Scale: As Noted Job No. Dwg. No. 07-02
Status: APPROVED AS NOTED Date: 2019-01-08

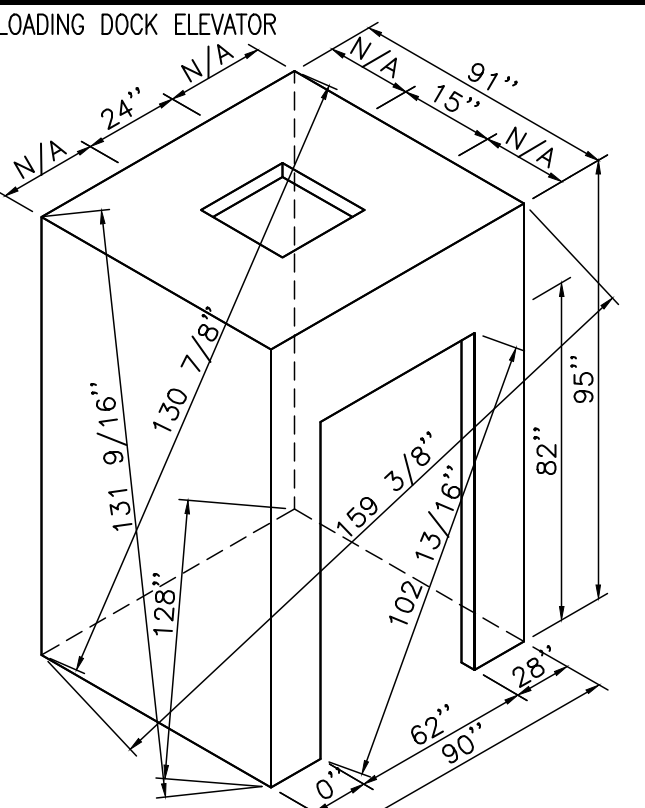
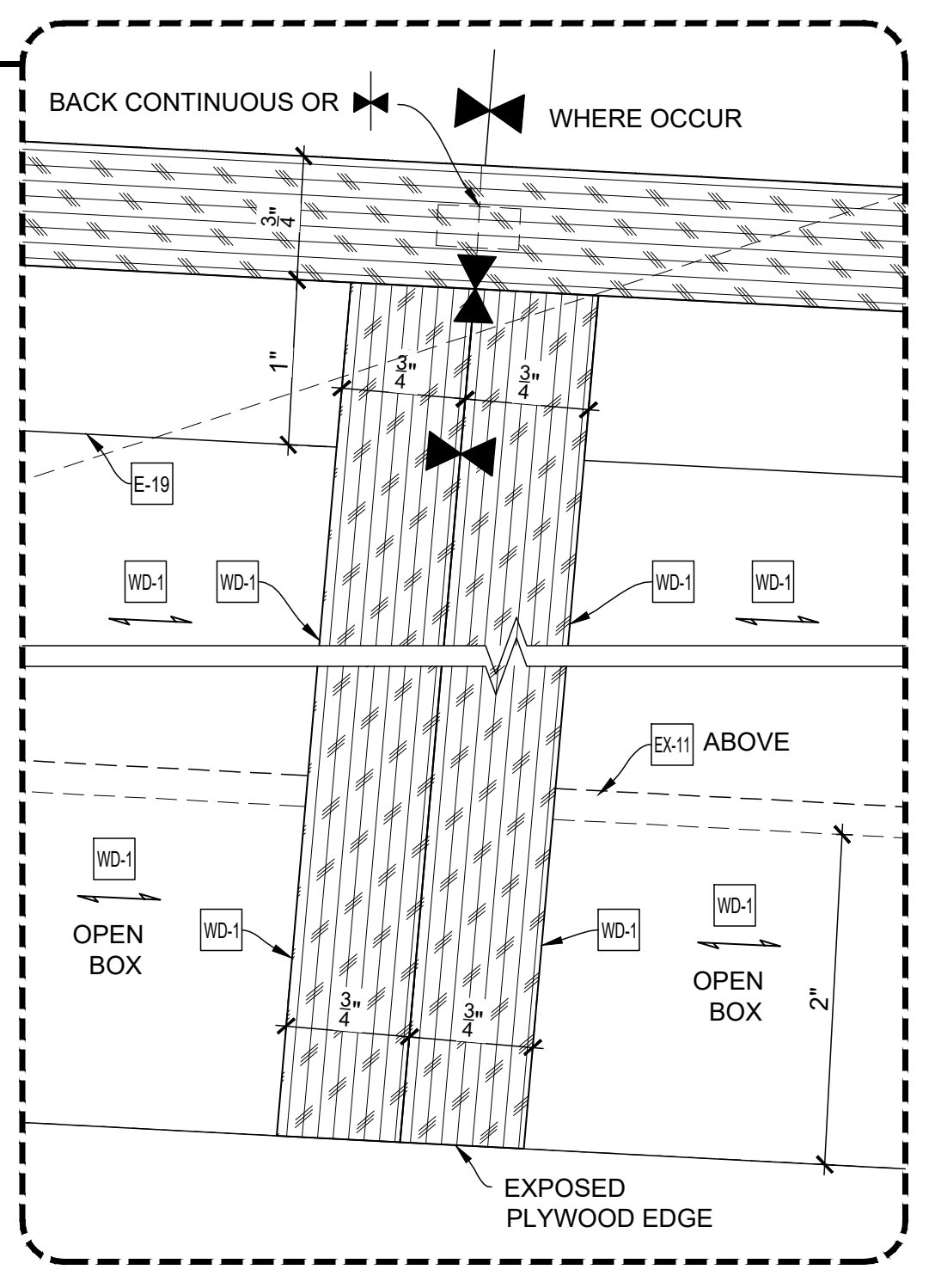
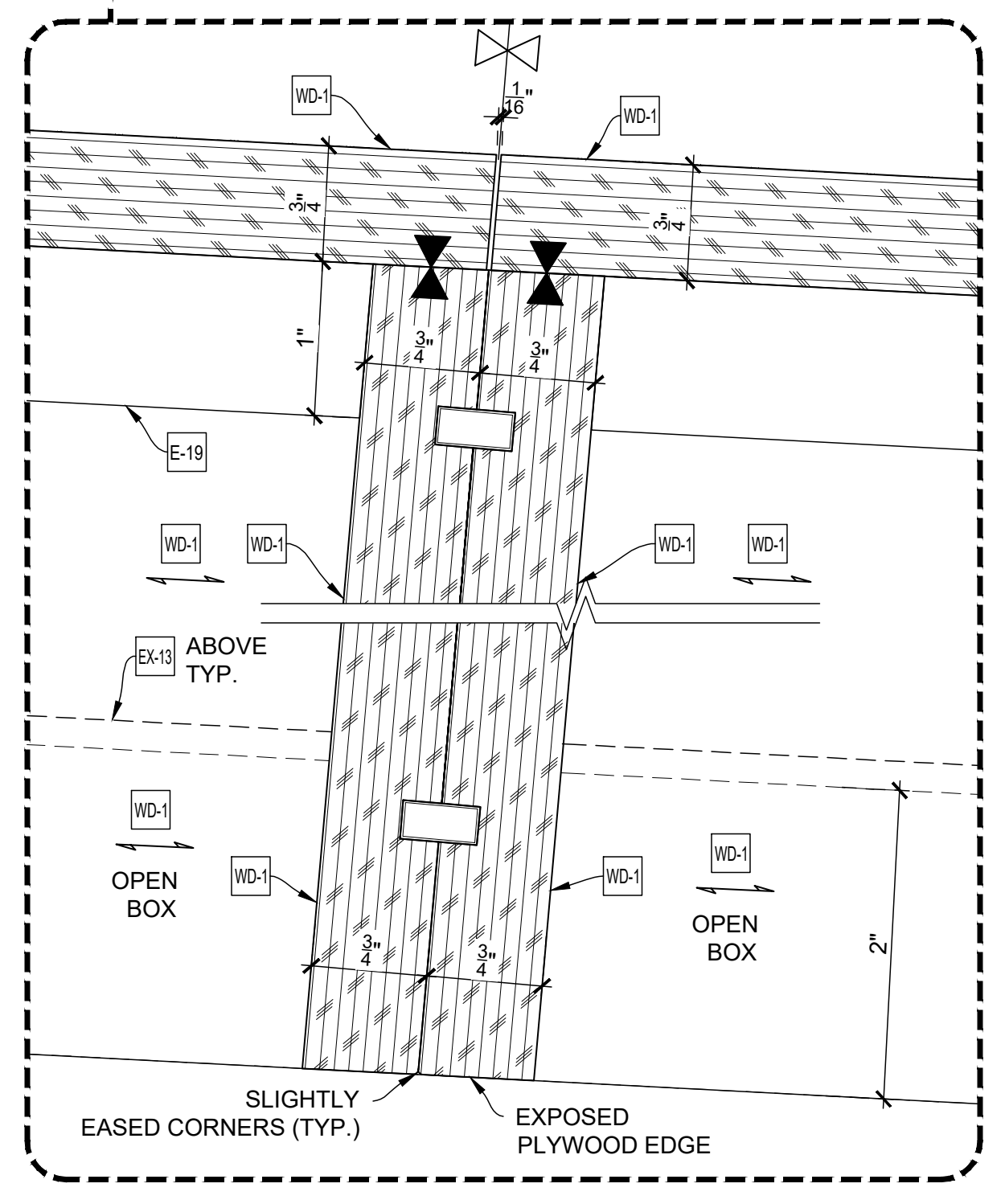
< Back



C PLAN SECTION
 SCALE: 1" = 1'-0"
 Archt Ref.: 1D/A-846.00

ARCHITECT NOTE:
 PLEASE VERIFY ALL LOCATIONS OF LIGHT FIXTURE (EX-13)

- REMOVABLE BACKS FOR FASTENING
- LOOSE TO FIELD
- INSTALLED LAST



- ⊗ Loose to field
- ⊕ Fixed in shop

THIS SPACE RESERVE FOR FINISH SCHEDULE

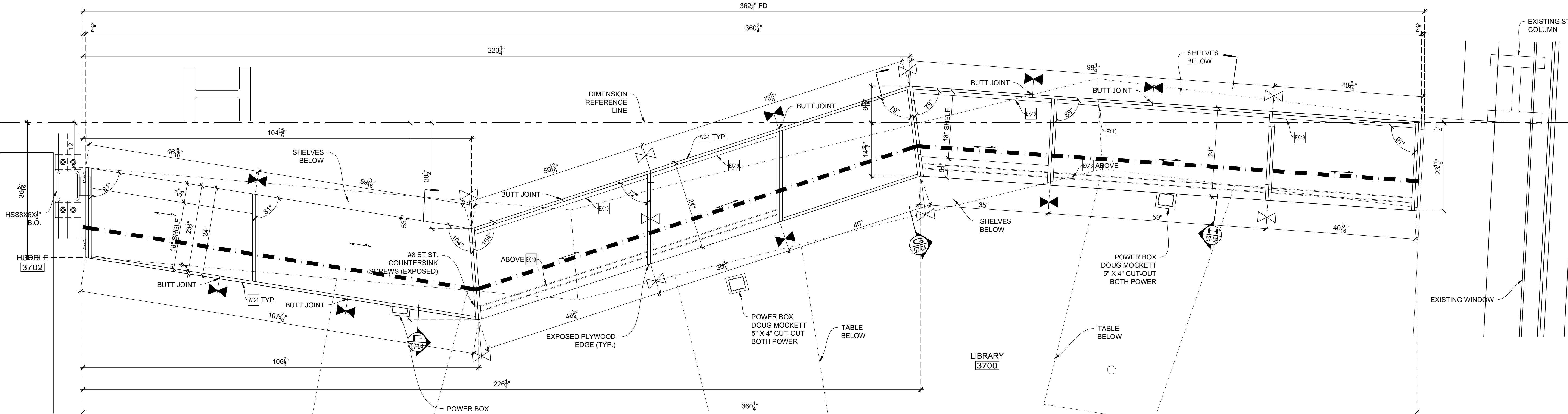
- EXCLUSIONS:**
- EX-11 1/2" LAMINATED GLASS
 - EX-13 LIGHT FIXTURE (L15)
 - EX-18 LIGHT FIXTURE (L5)
 - EX-19 FABRIC PANEL 1" THK. (AC1.1)

NAUF CERTIFIED PROJECT
 ALL MATERIALS TO BE UREA FORMALDEHYDE FREE

DRAWING SUBMITTALS AND RETURNS				
DATE	PURPOSE	TO	RETURN	RETURN STATUS
2019-01	FOR APPROVAL	JT MAGEN	2019-02-14	APPROVED AS NOTED

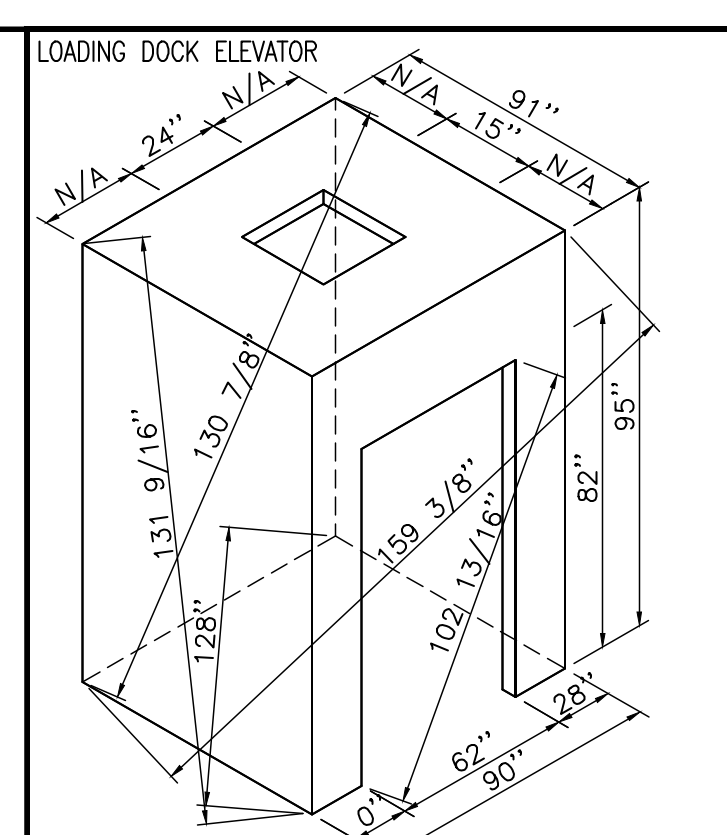
DRAWING REVISIONS				
DATE	DESCRIPTION	REVISED BY	COMMENTS	
1				
2				
3				
4				
5				
6				
7				
8				
9				
10				

RELEASES FOR FABRICATION	
DATE	DESCRIPTION



D PLAN SECTION
 SCALE: 1" = 1'-0"
 Archt Ref.: 1C/A-846.00

< Back



Loose to field
Fixed in shop

THIS SPACE
RESERVE
FOR FINISH
SCHEDULE

- EXCLUSIONS:
- EX-11 1/2" LAMINATED GLASS
 - EX-13 LIGHT FIXTURE (L15)
 - EX-18 LIGHT FIXTURE (L5)
 - EX-19 FABRIC PANEL 1" THK. (AC1.1)

NAUF CERTIFIED PROJECT
ALL MATERIALS TO BE
UREA FORMALDEHYDE FREE

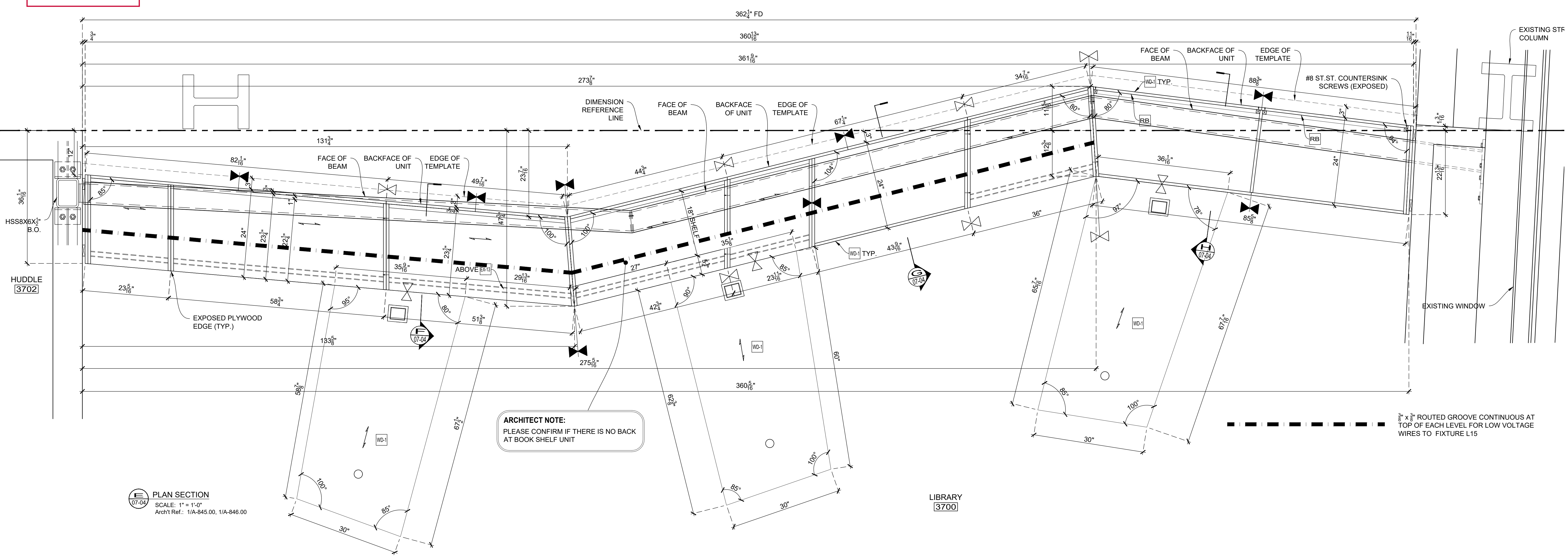
DRAWING SUBMITTALS AND RETURNS				
DATE	PURPOSE	TO	RETURN	RETURN STATUS
2019-03	FOR APPROVAL	JT MAGEN	2019-02-14	APPROVED AS NOTED

DRAWING REVISIONS			
DATE	DESCRIPTION	REVISED BY	COMMENTS
1			
2			
3			
4			
5			
6			
7			
8			
9			
10			

RELEASES FOR FABRICATION	
DATE	DESCRIPTION

TITLE: Library Shelving Unit And Tables
 ITEM NO: 7
 DESC.: SECTIONS
 PLYWOOD SHELVING UNIT AT LIBRARY 3700

By: PD Scale: As Noted Job No. Dwg. No.
 Status: APPROVED AS NOTED Date: 2019-01-08 **07-04**

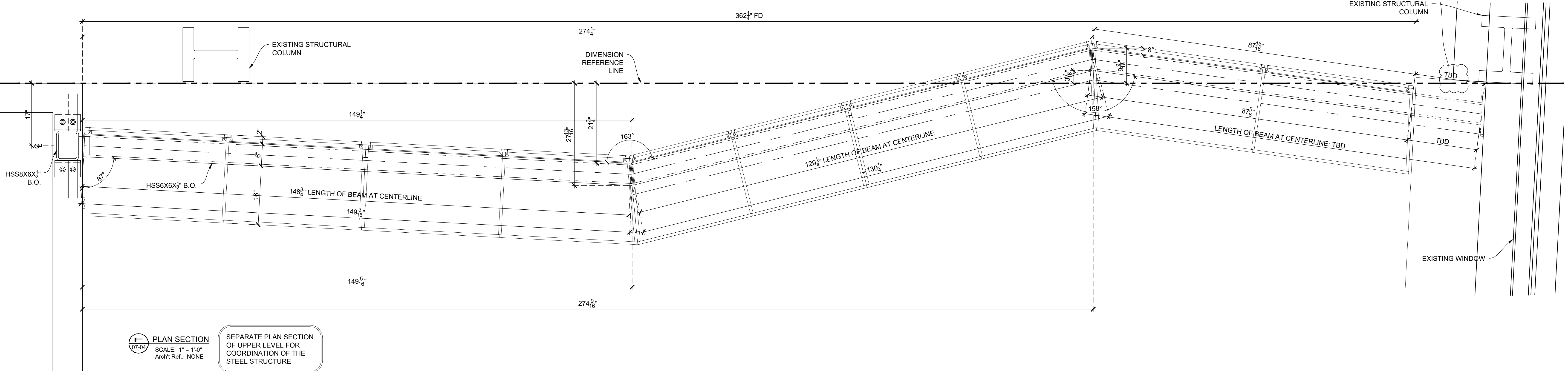


PLAN SECTION
 SCALE: 1" = 1'-0"
 Archt Ref: 1/A-845.00, 1/A-846.00

ARCHITECT NOTE:
 PLEASE CONFIRM IF THERE IS NO BACK
 AT BOOK SHELF UNIT

LIBRARY 3700

TO BE COORDINATED
BY STEEL INSTALLER/VENDOR

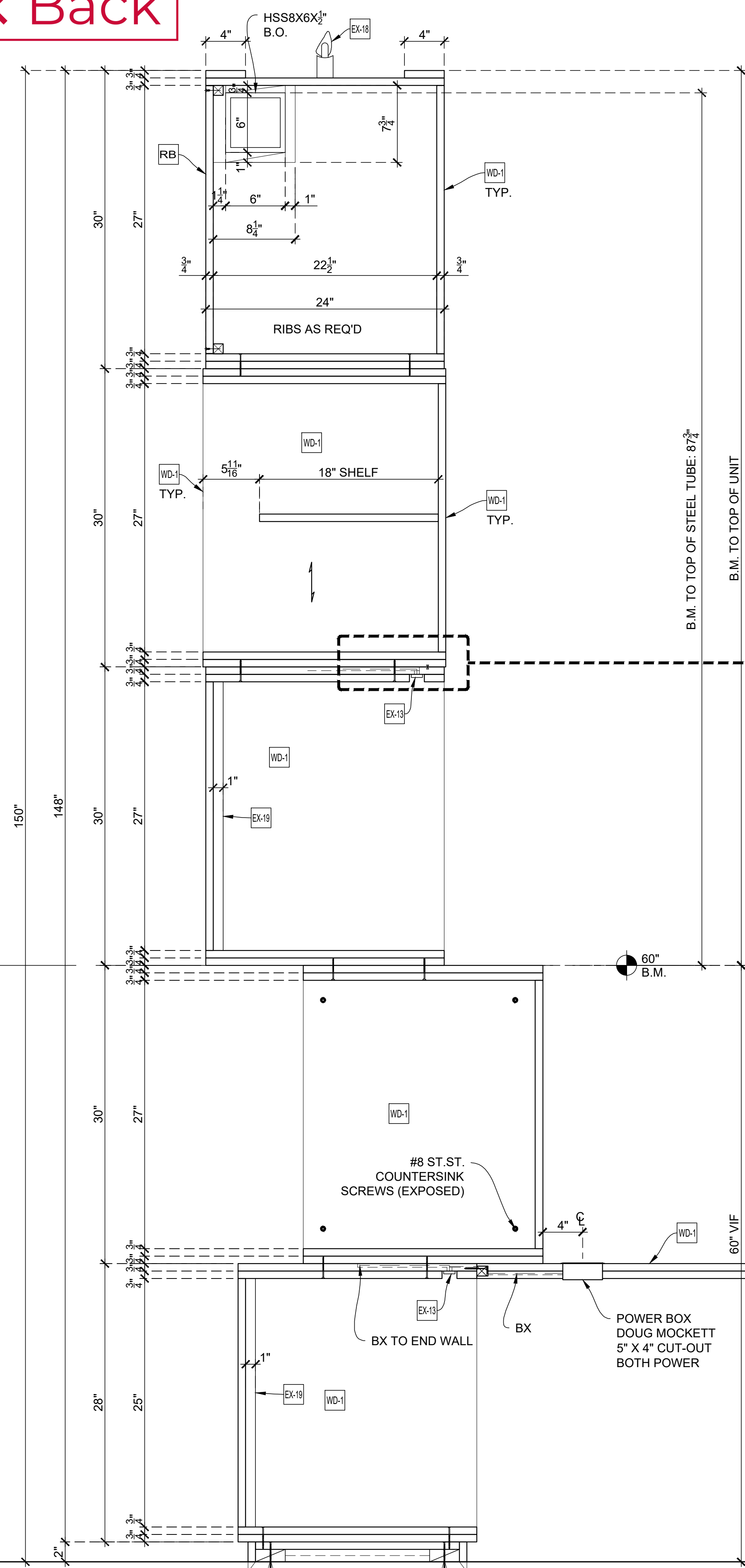


PLAN SECTION
 SCALE: 1" = 1'-0"
 Archt Ref: NONE

SEPARATE PLAN SECTION
 OF UPPER LEVEL FOR
 COORDINATION OF THE
 STEEL STRUCTURE

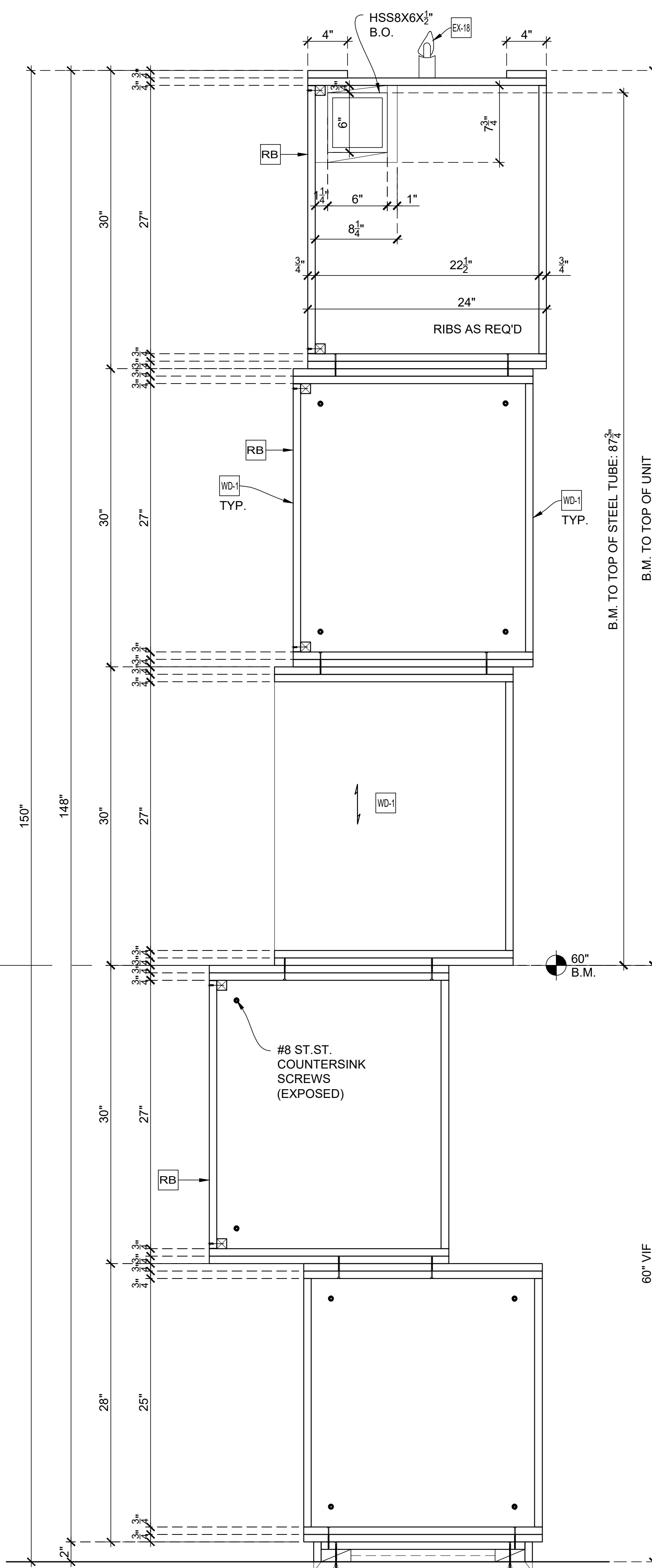
- REMOVABLE BACKS FOR FASTENING
- LOOSE TO FIELD
- INSTALLED LAST

[← Back](#)

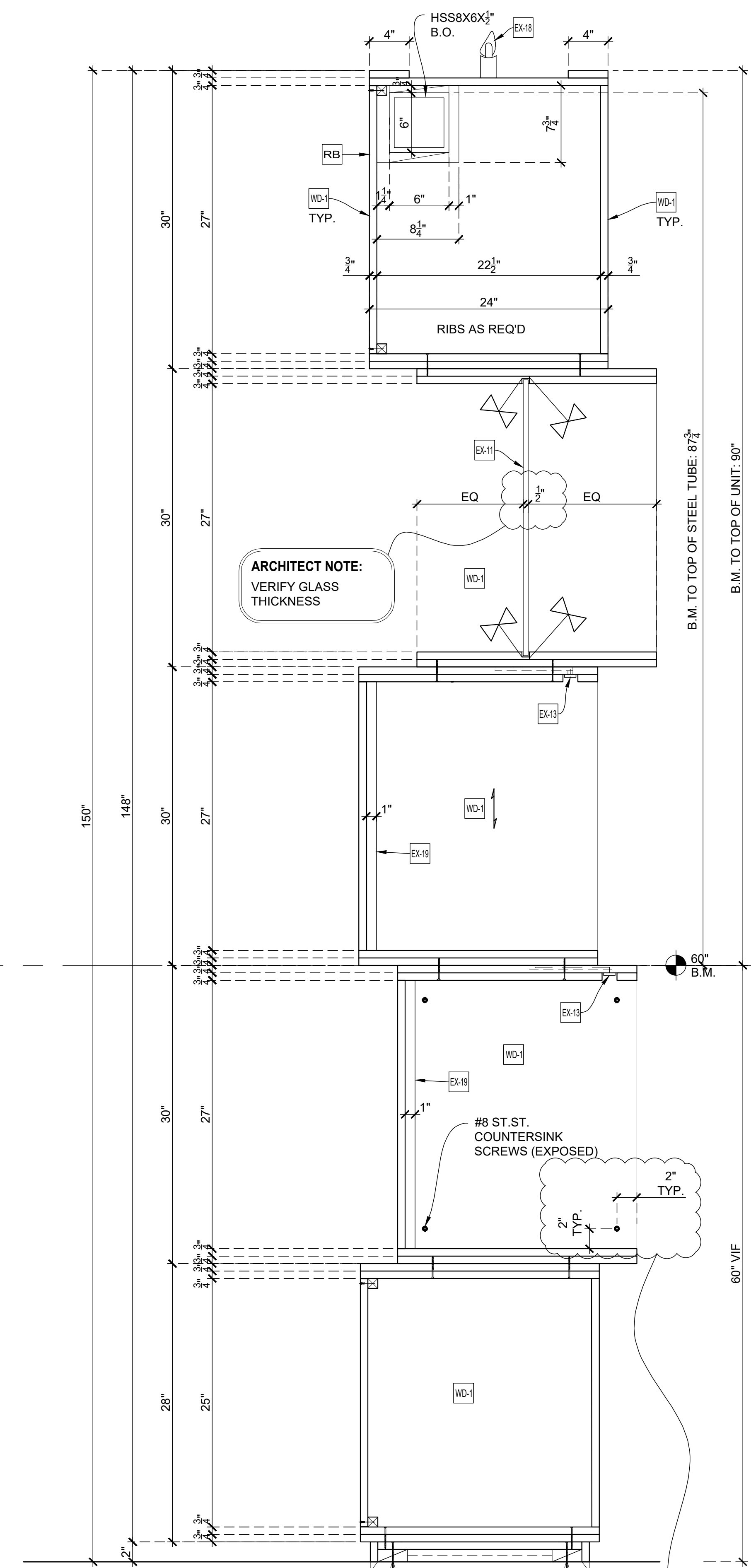


VERTICAL SECTION
SCALE: 1-1/2" = 1'-0"
Arch't Ref.: 1C/A-845.00, 1B/A-846.00

- REMOVABLE BACKS FOR FASTENING
- LOOSE TO FIELD
- INSTALLED LAST

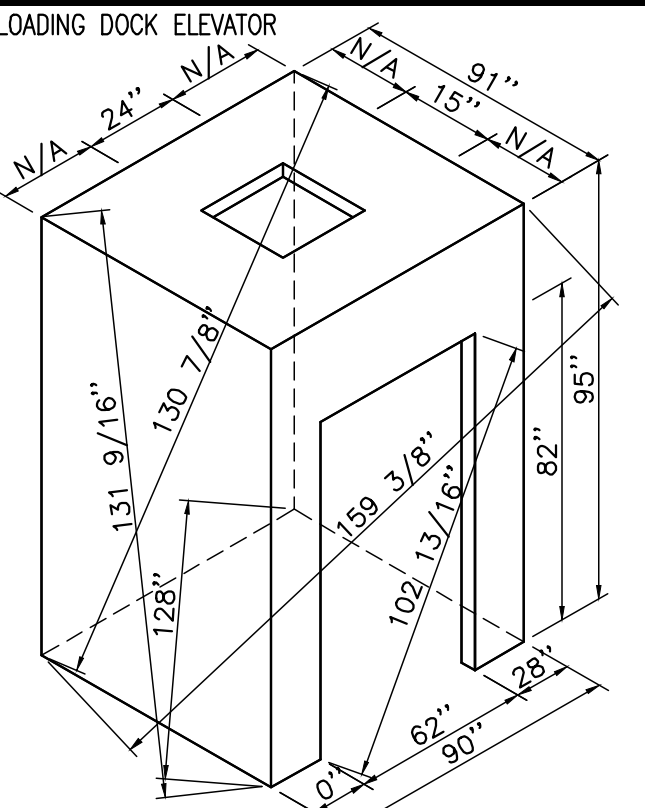
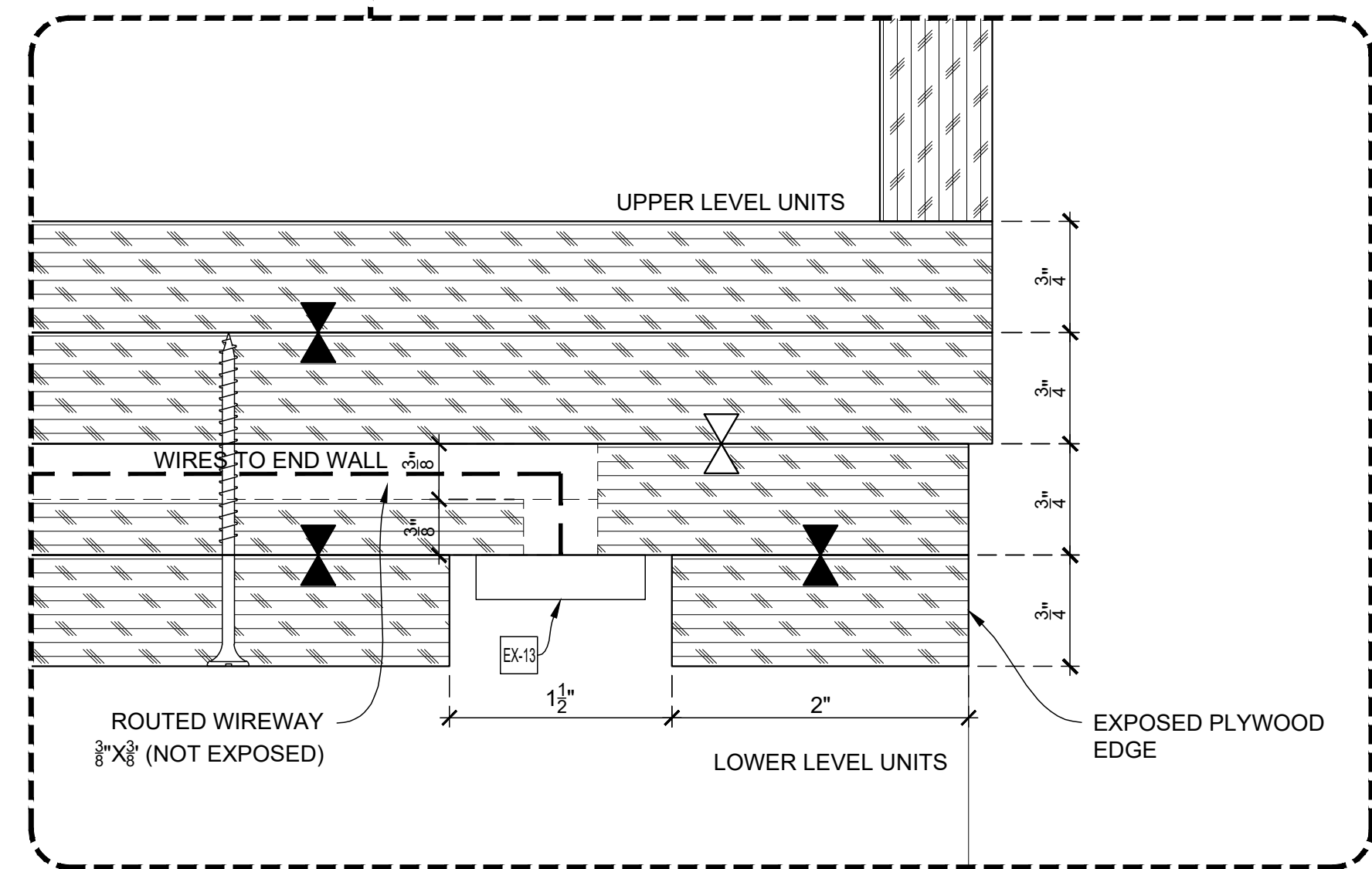


VERTICAL SECTION
SCALE: 1-1/2" = 1'-0"
Arch't Ref.: 1C/A-845.00



VERTICAL SECTION
SCALE: 1-1/2" = 1'-0"
Arch't Ref.: 1C/A-845.00

HOLD DIMENSION IF POSSIBLE



- ⊗ Loose to field
- ⊠ Fixed in shop

THIS SPACE RESERVE FOR FINISH SCHEDULE

- EXCLUSIONS:**
- EX-11 1/2" LAMINATED GLASS
 - EX-13 LIGHT FIXTURE (L15)
 - EX-18 LIGHT FIXTURE (L5)
 - EX-19 FABRIC PANEL 1" THK. (AC1.1)

NAUF CERTIFIED PROJECT
ALL MATERIALS TO BE UREA FORMALDEHYDE FREE

DRAWING SUBMITTALS AND RETURNS			
DATE	PURPOSE	TO	RETURN STATUS
2019-01	FOR APPROVAL	JT MAGEN	APPROVED AS NOTED

DRAWING REVISIONS			
DATE	DESCRIPTION	REVISED BY	COMMENTS
1			
2			
3			
4			
5			
6			
7			
8			
9			
10			

RELEASES FOR FABRICATION	
DATE	DESCRIPTION

[← Back](#)

REVISION CHECKLIST

BY	DATE	CHECKLIST FOR DRAWING REVISIONS	COMMENTS
		ALL REDLINE REVISIONS MADE AND HIGHLIGHTED ON PRINTED COPY	
		ALL IMPLICATIONS OF REDLINE MARKUPS CONSIDERED AND CORRECTED	
		ENGINEERING MANAGER NOTIFIED VIA EMAIL OF ALL POSSIBLE CHANGE ORDERS	
		ALL VISIBLE MILLWORK ELEVATED INCLUDING FINISHED END PANELS AND SOFFITS	
		PLAN AND VERTICAL SECTIONS CROSS CHECKED FOR ACCURACY	
		ALL MARKERS AND TAGS CHECKED AND VERIFIED TO BE CORRECT	
		ALL GRAIN DIRECTIONS CLEARLY INDICATED INCLUDING WOOD, METAL, AND PLAM FINISHES	
		APPLIANCES CHECKED AGAINST CUTS AND CUSTOM PANEL DRAWINGS CREATED AS NEEDED	
		DOOR HARDWARE SHOWN TO THE EXTENT POSSIBLE PER HARDWARE SCHEDULE AND CUTS	
		HARDWARE LOCATIONS DIMENSIONED OR REQUESTED FROM ENGINEERING MANAGER	
		ALL CABINET HARDWARE ACCURATELY LISTED INCLUDING FINISHES	
		ALL FINISHES ACCURATELY LISTED , INDICATED ON DRAWINGS, AND ASSIGNED TO SERIES	
		MATERIALS CHECKED AGAINST SCOPE TO VERIFY WHETHER PROVIDED BY MB	
		ALL NECESSARY FIELD DIMENSIONS INDICATED ON DRAWINGS	
		ALL FIELD DIMENSIONS APPLIED, ALL VIF DIMENSIONS REPLACED WTH FD	
		ENGINEERING MANAGER NOTIFIED OF MISSING FIELD DIMENSIONS	
		ALL +/- INDICATIONS REMOVED EXCEPT WHERE SCRIBE IS INVOLVED	
		ALL LOOSE JOINTS INDICATED CLEARLY	
		COMPONENT SIZES CHECKED AGAINST ELEVATOR SIZE TO ENSURE ACCESS	
		UNUSED GEOMETRY DELETED FROM DRAWING	
		UNUSED PAPERSPACE TABS DELETED FROM DRAWING	
		ALL RESOLVED QUESTIONS, CLOUDS, AND NOTES REMOVED FROM DRAWING	
		ENGINEERING MANAGER NOTIFIED BY EMAIL OF ANY NEW ISSUES WHICH REQUIRE ANSWERS	
		ITEMS READY FOR FABRICATION CLEARLY INDICATED OR ITEMS ON HOLD CLEARLY INDICATED	

USE ATTRIBUTE EDIT COMMAND ON AN ITEM TO EDIT USERNAME, DATE, AND COMMENTS

✓	DZALE	10/21/14	CHECKLIST ITEM	NO FOLLOW UP NEEDED
↓	dzale	10/21/14	CHECKLIST ITEM	NEEDS FOLLOW UP
✓	NA	NA	CHECKLIST ITEM	NOT APPLICABLE

Date Drawn:	X	Dwg# X
Drawn by:	X	